

Pro-Log Quick Reference Guide

INITIAL USE

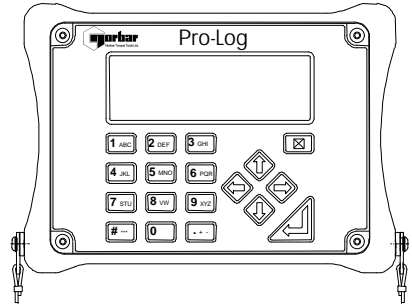
Connect Pro-Log to transducer. Switch on at back panel.

Use internal batteries or for AC power operation, connect power adapter.

NOTE

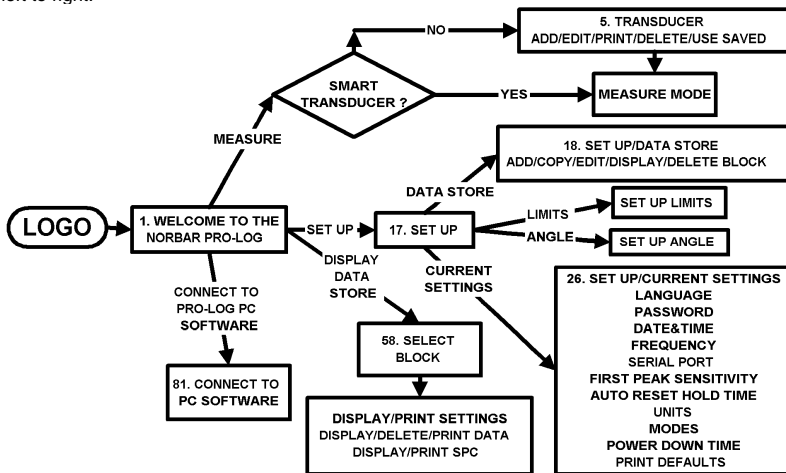
It is essential that a new Pro-log is charged for 14 hours on AC power to ensure a full battery.

For further information on operation & applications see Pro-Log Operators Handbook (Part number 34263).



SYSTEM FLOWCHART

Follow from left to right.



MEASURE SCREEN FUNCTIONS

KEY	FUNCTION	NOTES
1	ANGLE RESET	For angle rotary transducer.
3	↵ TO LOG / NO LOG toggle	Selects if future readings are to be logged. (LOG = store & print).
4	ZERO	To zero transducer in TRACK mode.
5	UNITS SELECT	Steps through available units.
6	RESET / PRINT	Reset Torque / Load / Pressure. Will also log reading if "3=↵ TO LOG".
7	MODE SELECT	Steps through modes available. See mode table.
↵	LOG READING	Will log (store & print) reading if "3=↵ TO LOG".
#	SELECT BLOCK	Select blocks for transducer connected.
X	Exit	Exit from measure.

NORBAR TORQUE TOOLS LTD.BEAUMONT ROAD, BANBURY, OXFORDSHIRE.OX16 1XJ. UNITED KINGDOM.	
TEL : ++44 (0) 1295 270333	FAX : ++44 (0) 1295 753643
http://www.norbar.com	Email : Sales@norbar.com

MODES:

MODE	HOW IT WORKS.	VISUAL REPRESENTATION
TRACK	Follows signal.	
PEAK MEMORY & MANUAL RESET	Hold highest signal until reset by user.	
PEAK MEMORY & AUTO RESET	Hold highest signal until signal returns to zero.	
FIRST PEAK MEMORY & MANUAL RESET	Hold 1 st signal peak until reset by user. The first peak is detected with the 'first peak sensitivity' setting'.	
FIRST PEAK MEMORY & AUTO RESET	Hold 1 st signal peak for set time, then resets.	
SECOND PEAK MEMORY & MANUAL RESET	Hold 1 st signal peak and shows any 2 nd peak until reset by user.	
SECOND PEAK MEMORY & AUTO RESET	Hold 1 st signal peak for set time, shows any 2 nd peak in set time.	

OTHER MODES :	IDENTICAL TO MODE :	FILTER SETTING (fixed for mode)
DIAL & ELECTRONIC	PEAK MEMORY & MANUAL RESET	500 Hz
CLICK & CAM	FIRST PEAK MEMORY & AUTO RESET	500 Hz
IMPULSE TOOL	PEAK MEMORY & MANUAL RESET	2500 Hz
CLUTCH TOOL	PEAK MEMORY & MANUAL RESET	2500 Hz
STALL TOOL	PEAK MEMORY & MANUAL RESET	500 Hz

SETTINGS:

	FEATURE	SETTINGS
Current	Language	40330.SE – English, Francais, Deutsch, Italiano, Espanol, Nederlands & Portuguese. 40330.NE – English, Francais, Deutsch, Dansk, Suomi, Norsk & Svenska.
	Password	Any 6 characters. (Factory set to 000000).
	Date & Time	Selectable format for date. 24 hour clock.
	Frequency	8 th order butterworth low pass filter with a –3dB point from 100Hz to 6000Hz.
	Serial Port	PARITY / BAUD RATE / DATA BITS / STOP BITS / HANDSHAKE
	Auto Reset Hold Time	1 / 2 / 3 / 4 seconds.
	First Peak Sensitivity	LOW (2.5% of reading) / MEDIUM (5% of reading) / HIGH (10% of reading) This is the amount by which the signal drops before the first peak is registered.
	Units	Torque (N.m, dN.m, cN.m, lbf.ft, lbf.in, ozf.in, ft.lb, in.lb, in.oz, kgf.m, kgf.cm, gf.m & gf.cm) Load (kN, N, tonf, lbf, ozf, tonnef, kgf & gf.) Pressure (bar & lbf/in ²) [PRINTED AS lbf/sq.in]
	Modes	12 modes of operation, see table above.
Power Down Time	1 TO 99 minutes. Set to 0 (zero) to disable.	
Limit Detector	Upper Limit	TARGET + ??%
	Lower Limit	TARGET - ??%
	Latch	OFF / UNTIL MEMORY RESET / UNTIL EXTERNAL RESET
	Operate	OFF / ONLY / ONLY / &
Angle	Mode	TRACK / PEAK.
	Threshold	Value to start reading angle.
	Limit Detector	All features of Limit Detector, but measured in °.