

GLOBAL SERVICE

Norbar is the only torque equipment manufacturer capable of offering tool and instrument calibration services to the original factory standard on four continents.

Accredited laboratories in Australia, USA, Singapore, China and India operate the same equipment and procedures as the UKAS accredited laboratory within our headquarters in the UK.



NORBAR TORQUE TOOLS LTD
Wildmere Road, Banbury, Oxfordshire, OX16 3JU
UNITED KINGDOM
Tel + 44 (0)1295 753600
Email sales@norbar.com



NORBAR TORQUE TOOLS
45-47 Raglan Avenue, Edwardstown
SA 5039
AUSTRALIA
Tel + 61 (0)8 8292 9777
Email enquiry@norbar.com.au



NORBAR TORQUE TOOLS INC
36400 Biltmore Place, Willoughby
Ohio 44094
USA
Tel + 1 866 667 2272
Email inquiry@norbar.us



NORBAR TORQUE TOOLS PTE LTD
194 Pandan Loop, #07-20 Pantech Business Hub
SINGAPORE 128383
Tel + 65 6841 1371
Email enquires@norbar.sg



NORBAR TORQUE TOOLS (SHANGHAI) LTD
91 Building- 7F, No. 1122 North Qinzhou Road,
Xuhui District, Shanghai
CHINA 201103
Tel + 86 21 6145 0368
Email sales@norbar.com.cn



NORBAR TORQUE TOOLS INDIA PVT. LTD
Plot No A – 168 Khairne Industrial Area
Thane Belapur Road
Mahape Navi Mumbai – 400 709
INDIA
Tel + 91 22 2778 8480
Email enquiry@norbar.in

NORBAR PRODUCT PORTFOLIO



Torque Screwdrivers



Torque Wrenches



Electronic Torque Wrenches



Manual Torque Multipliers



Pneumatic Torque Tools



Electronic Torque Tools



Torque Measurement Instruments



Torque Transducers



Ultrasonic Bolt Measurement



Calibration Services

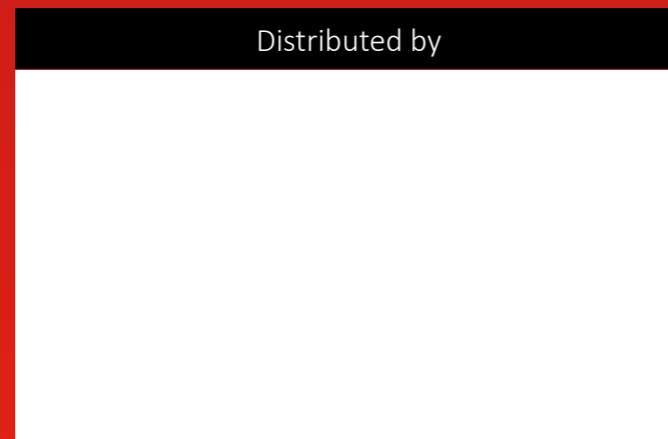


NORTORQUE®

EFFICIENT, AFFORDABLE, PROFESSIONAL QUALITY



Distributed by



www.norbar.com



THE NORTORQUE® UTILISES NORBAR'S PROVEN MECHANISM AND INTERNAL COMPONENTS AND INCORPORATES THEM INTO A PURPOSEFUL AND ATTRACTIVE TORQUE WRENCH THAT WILL DELIGHT A WIDE RANGE OF USERS FROM PROFESSIONAL MECHANICS TO HOBBY ENTHUSIASTS.

In developing NorTorque®, Norbar's objective was to deliver outstanding quality and performance in a value for money package. The wrench offers a comfortable, robust single material handle which also contains an easy to set scale. Fine engineering ensures that the wrench adjustment is both fast and fingertip light meaning that you can do your job more efficiently. The sleek body tube finish was chosen for its robustness and minimal process impact on the environment.



HANGER

Convenient hanger feature for tool storage also aids wrench unlocking and adjustment

RAPID ADJUSTMENT

Just eight turns to cover the entire scale



MICROMETER SCALE

Secondary scale applies to the primary torque units (N·m on a dual scale wrench) for simple and error free setting



SQUARE DRIVE ADAPTORS FOR RATCHETS

3/8" to 1/2" adaptor included with 60 N·m wrench,
1/2" to 3/8" adaptor included with 100 N·m wrench

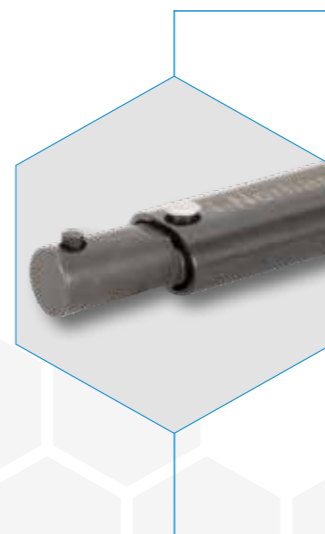


PREVENTS ACCIDENTAL ADJUSTMENT

Push/pull lock is fast and intuitive to use and prevents accidental adjustment to set torque

ACCURACY

Accurate to ±3% of reading which meets and exceeds ISO 6789

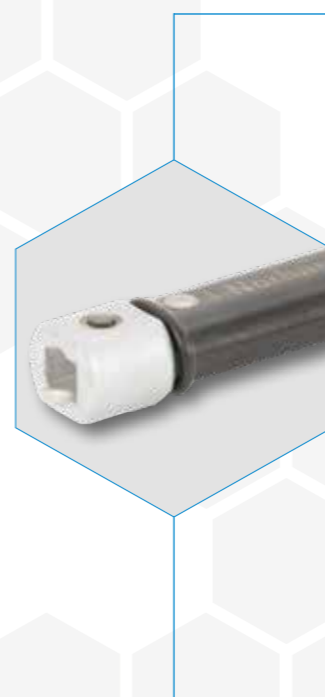


Adjustable 16mm Spigot - Dual Scale

Part Number	Model Name	Torque Range		End Fitting	Length (mm)	Weight (kg)
		N·m	lbf·ft			
130141	NorTorque® 60	12 - 60	10 - 45	16mm Spigot	323	0.60
130142	NorTorque® 100	20 - 100	15 - 75	16mm Spigot	357	0.66
130143	NorTorque® 200	40 - 200	30 - 150	16mm Spigot	440	0.78
130144	NorTorque® 300	60 - 300	45 - 220	16mm Spigot	566	1.13

Adjustable 16mm Spigot - N·m Only

Part Number	Model Name	Torque Range		End Fitting	Length (mm)	Weight (kg)
		N·m	lbf·ft			
130161	NorTorque® 60	12 - 60	N/A	16mm Spigot	323	0.60
130162	NorTorque® 100	20 - 100	N/A	16mm Spigot	357	0.66
130163	NorTorque® 200	40 - 200	N/A	16mm Spigot	440	0.78
130164	NorTorque® 300	60 - 300	N/A	16mm Spigot	566	1.13



Adjustable Female End - Dual Scale

Part Number	Model Name	Torque Range		End Fitting	Length (mm)	Weight (kg)
		N·m	lbf·ft			
130121	NorTorque® 60	12 - 60	10 - 45	9 x 12 Female	326	0.62
130123	NorTorque® 100	20 - 100	15 - 75	9 x 12 Female	360	0.68
130125	NorTorque® 200	40 - 200	30 - 150	9 x 12 Female	438	0.79
130126	NorTorque® 200	40 - 200	30 - 150	14 x 18 Female	448	0.89
130127	NorTorque® 300	60 - 300	45 - 220	14 x 18 Female	567	1.15
130128	NorTorque® 340	60 - 340	45 - 250	14 x 18 Female	657	1.30

Adjustable Female End - N·m Only

Part Number	Model Name	Torque Range		End Fitting	Length (mm)	Weight (kg)
		N·m	lbf·ft			
130131	NorTorque® 60	12 - 60	N/A	9 x 12 Female	326	0.62
130133	NorTorque® 100	20 - 100	N/A	9 x 12 Female	360	0.68
130135	NorTorque® 200	40 - 200	N/A	9 x 12 Female	438	0.79
130136	NorTorque® 200	40 - 200	N/A	14 x 18 Female	448	0.89
130137	NorTorque® 300	60 - 300	N/A	14 x 18 Female	567	1.15
130138	NorTorque® 340	60 - 340	N/A	14 x 18 Female	657	1.30



Adjustable Ratchet - Dual Scale

Part Number	Model Name	Torque Range		Square Drive	Ratchet Diameter	Length (mm)	Weight (kg)
		N·m	lbf·ft				
130101	NorTorque® 60	12 - 60	10 - 45	3/8"	36mm	328	0.7
130103	NorTorque® 100	20 - 100	15 - 75	1/2"	42mm	375	0.8
130104	NorTorque® 200	40 - 200	30 - 150	1/2"	45mm	459	1.0
130105	NorTorque® 300	60 - 300	45 - 220	1/2"	52mm	588	1.4
130106	NorTorque® 340	60 - 340	45 - 250	1/2"	52mm	679	1.55

Adjustable Ratchet - N·m Only

Part Number	Model Name	Torque Range		Square Drive	Ratchet Diameter	Length (mm)	Weight (kg)
		N·m	lbf·ft				
130111	NorTorque® 60	12 - 60	N/A	3/8"	36mm	328	0.7
130113	NorTorque® 100	20 - 100	N/A	1/2"	42mm	375	0.8
130114	NorTorque® 200	40 - 200	N/A	1/2"	45mm	459	1.0
130115	NorTorque® 300	60 - 300	N/A	1/2"	52mm	588	1.4
130116	NorTorque® 340	60 - 340	N/A	1/2"	52mm	679	1.55